



AKIRA - TUBE

Documentation V1.2
25/06/2025

Smaolab.org (c)

Support :
contact@smaolab.org

Bass frequencies

You can increase or decrease the level of **Analog Tube Amount** applied on the input signal.
Only applied on the **bass** frequencies.

3 Band equalizer

- You can increase/decrease the **Low Shelf Gain** (point at 210hz)
- You can increase/decrease the **High Shelf Gain** (point at 10Khz)
- You can change the **Peak Eq. Frequency** (300hz to 8200hz)
- You can increase/decrease the **Peak Gain**

Analog Low Pass Filter

- You can increase/decrease the **Low Pass Frequencies**
- You can increase/decrease the **Resonance**
- You can increase/decrease the **Gain** overall filter
- You can change the filter behavior : **Clean** or **Dirty**

Note: Set the Resonance at 3.0 -> the Filter will oscillate !

Internal Preset Bank

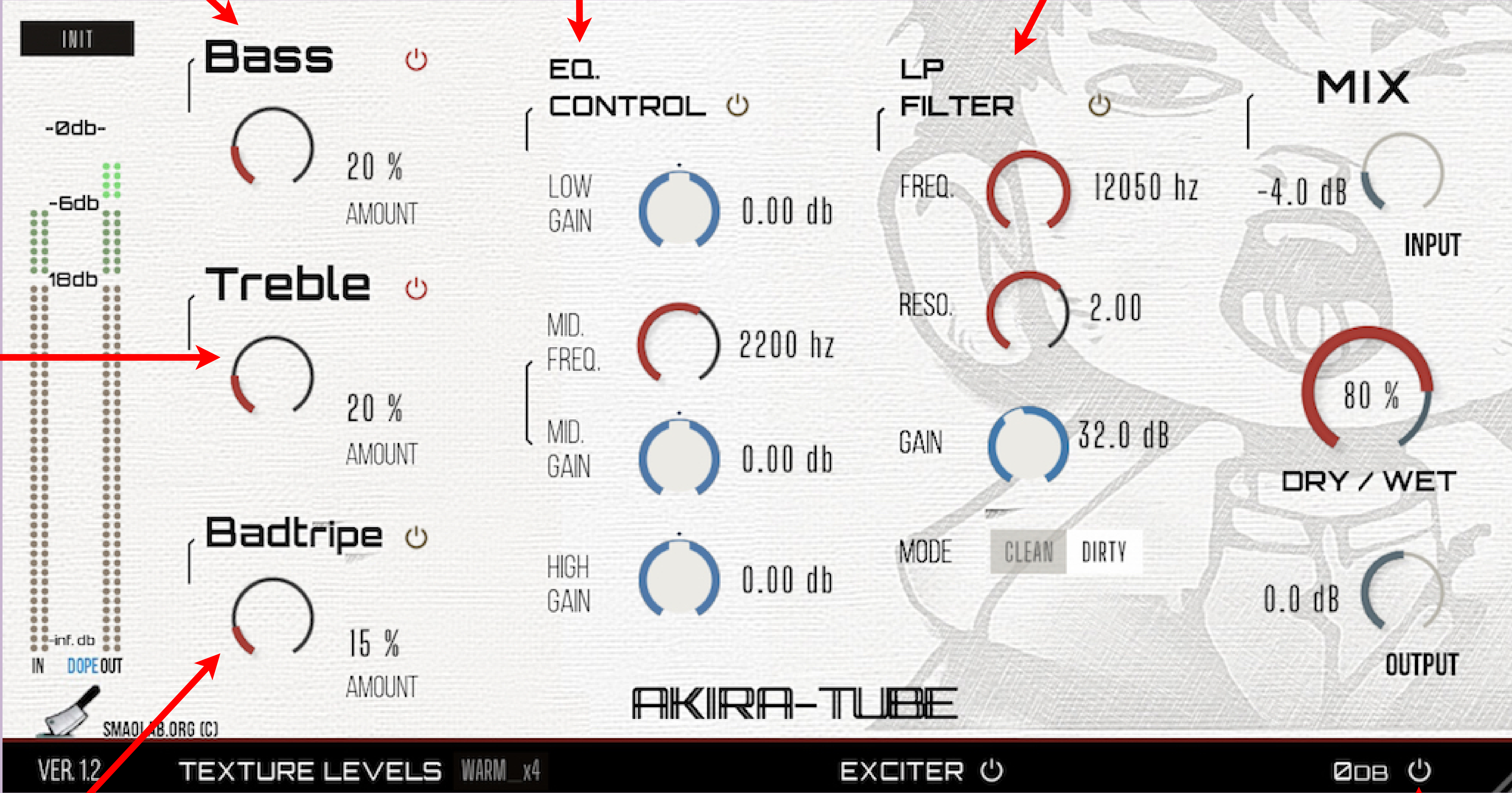
Click/select you favorite preset to start with.

Treble frequencies

You can increase or decrease the level of **Analog Tube Amount** applied on the input signal.
Only applied on the **treble** frequencies.

LEVEL METER

Input level meter
Dope meter (how much distortion you add to your sound)
Output level meter (Input+dope)



Badtripe (Bass+Treble frequencies)

You can increase or decrease the level of **Analog Tube Amount** applied on the input signal.
Applied on the **Bass+Treble** frequencies.

Oversampling / Texture Levels

Some people calls it **Oversampling** (x0, x2... x8)...

Some others use this function as a **texture add-on** to the overall sound !

Try & make your own opinion !

EXCITER

Nice **BAXANDALL CIRCUITRY** added to the sound.

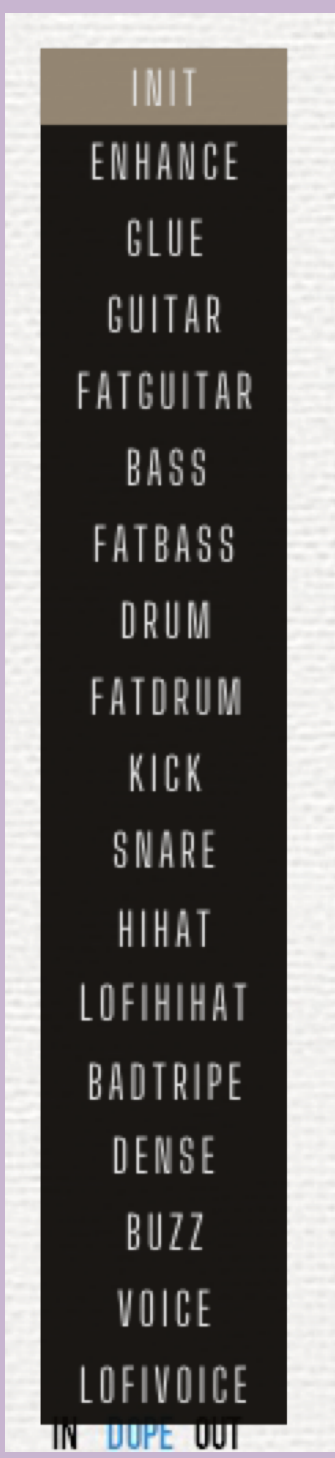
This functions increases some **secret frequencies** in your audio source (using a **natural filter**)

SOFT LIMITER on/off

- Automatic Attack/Release detection
- Limits the sounds at 0db
- Can add nice harmonics if set it ON + increase BASS and/or TREBLE amount !

PRESETS (Load/Save)

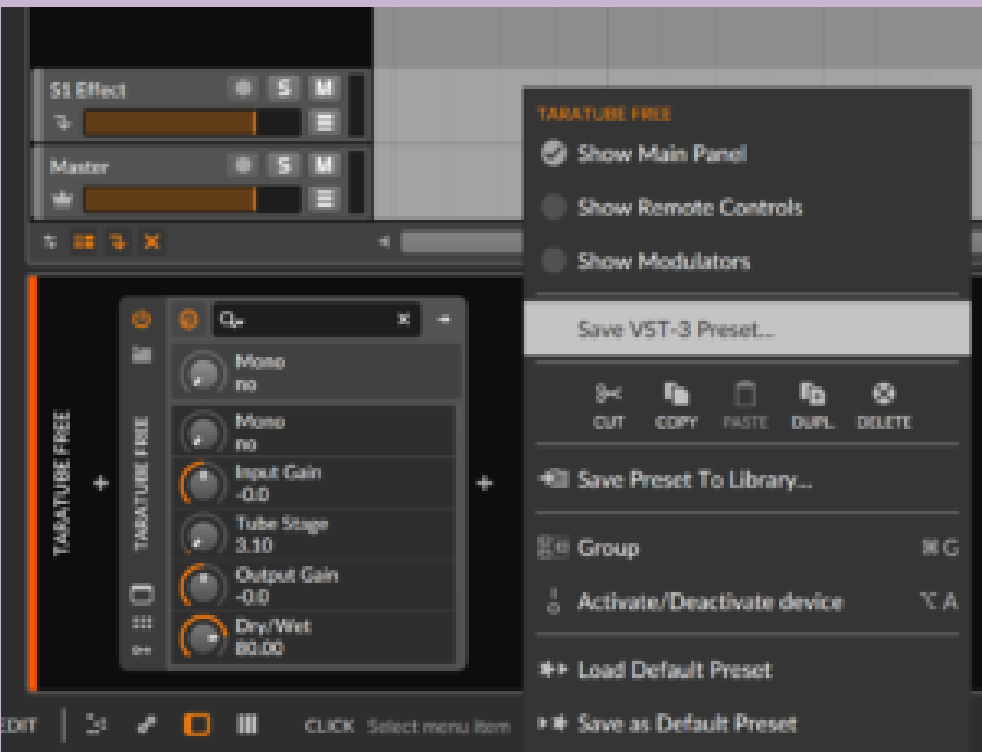
18 PRESETS are included in the PRO version



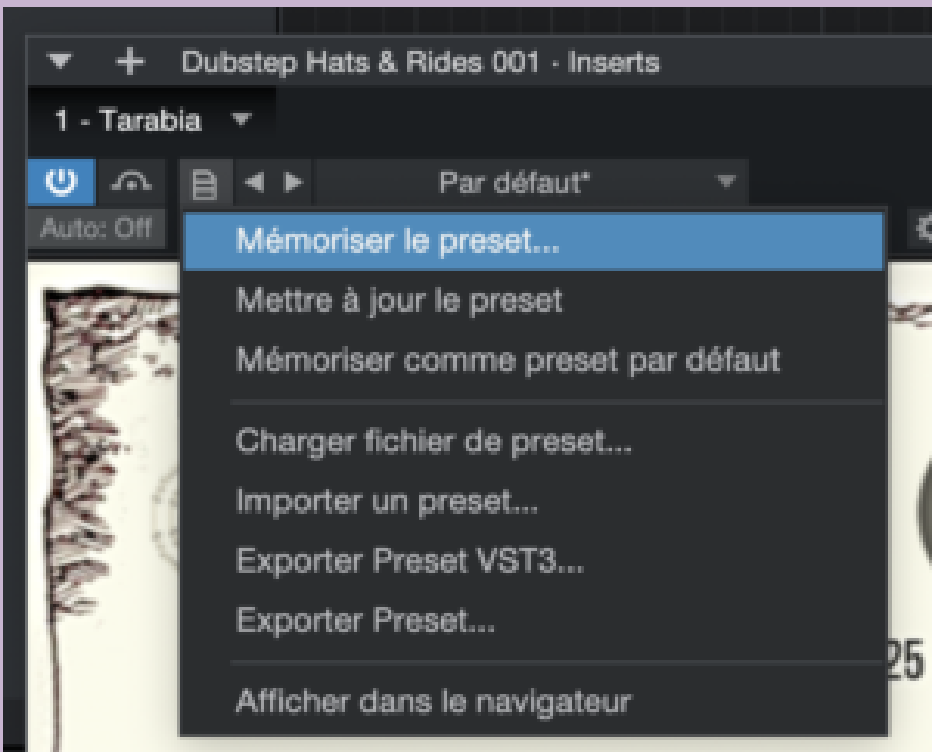
You can **SAVE** your own presets (and recall them with ease) using the dedicated function in your DAW (in Studio One, in Ableton Live, etc.) :



Ableton Live



Bitwig Studio



Studio One

Electronic schema

